

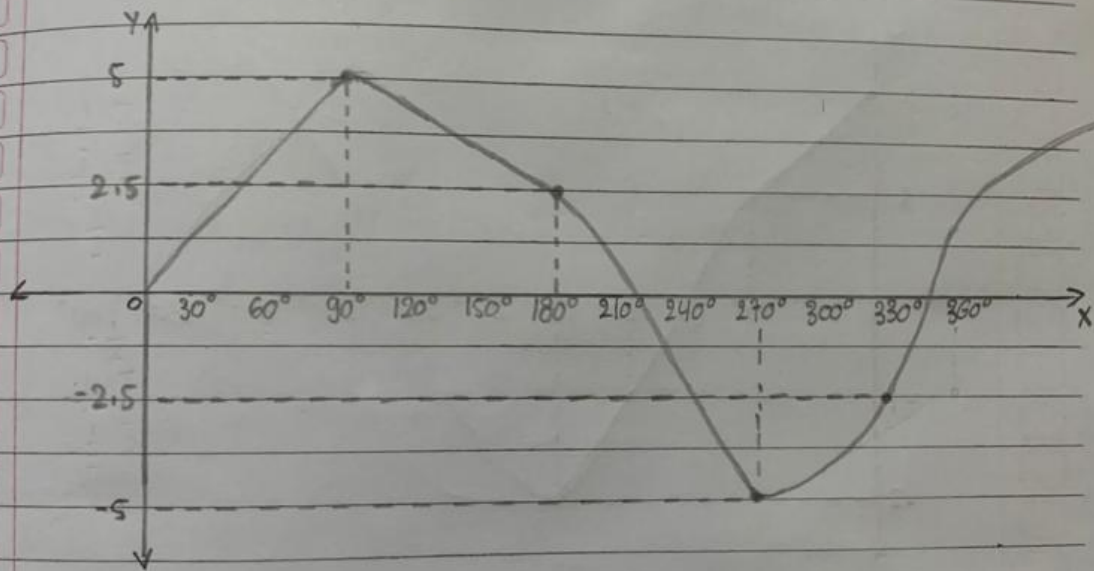
Tugas Grafik Fungsi Trigonometri

Selasa

No.:

Date: 15-02-2022

Gambarlah grafik dari : $y = 5 \sin x$



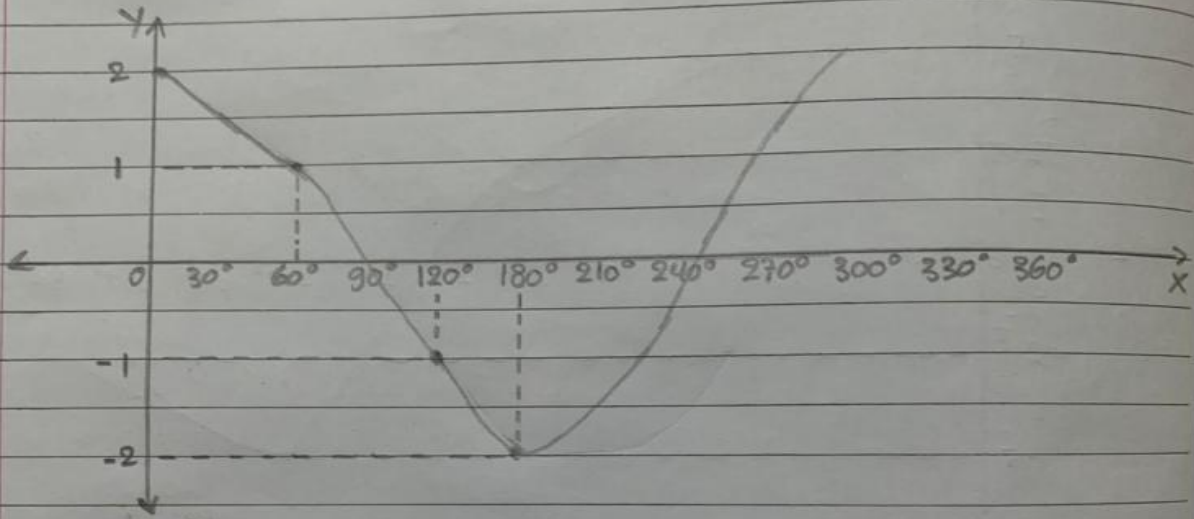
Amplitudo = 5 $\begin{cases} \rightarrow \text{max} : 5 \\ \rightarrow \text{min} : -5 \end{cases}$

Periode = $\frac{360^\circ}{1} = 360^\circ$

Date:

o.:

Grafik dari $y = 2 \cos x$



Amplitudo : 2 $\begin{cases} \rightarrow \text{max} = 2 \\ \rightarrow \text{min} = -2 \end{cases}$

Periode : $\frac{360}{1} = 360^\circ$

Titik :